

Electric Cooktops

Flexible Cooking Options



- All units offer at least one dual ring element, with the **36" Benchmark®** adding a triple ring element
- True bridge elements (*on select models*) provide an additional bow tie element to join the 2 elements together and heat evenly

SpeedBoost®

- Offers faster heat up times for dishes with liquids—available on **800 Series** cooktops & the **30" Benchmark®**
- On dual ring elements, the outer ring must be activated to use SpeedBoost®



AutoChef®

- Uses sensors in the cooktop to maintain exact cooking temperatures for consistent results
- A Bosch exclusive feature—available on **Benchmark®** units

— How To Use —

- 1) Place pan on element and select **AutoChef®** on the cooktop, followed by the heat setting from the recommendations in Use & Care
- 2) Once the pan has been heated to temperature, an audible tone sounds, indicating it's time to add food and begin cooking
- 3) No further adjustments are needed, the consumer can enjoy precise results every time

Frying levels				
1	2	3	4	5
Very low	Low	Medium - low	Medium - high	High
e.g. Preparing and reducing sauces, sweating vegetables and frying food in extra virgin olive oil, butter or margarine.	e.g. • Omelette • French Toast • Hash browns • Fried food in butter or olive oil	e.g. • Pork chop • Hamburger • Fish • Pancakes	e.g. • Veal cutlet • Ground meat • Thin slices of meat • Vegetables	e.g. • Steak medium rare • Fried boiled potatoes

Induction Cooktops

SpeedBoost®

- Available **all induction** cooktops and on **any element** on the cooktop, provided the other element in the same group is not in use
- ShortBoost—on **800** and **Benchmark®** units—provides 30 seconds of boost power, ideal for cooking with oil or pans with thin walls



AutoChef®

- Available on **800 Series** and **Benchmark®** models
- AutoChef® saves energy by applying only the needed amount of energy to the pan—*five settings available*

FlexInduction® – Benchmark®

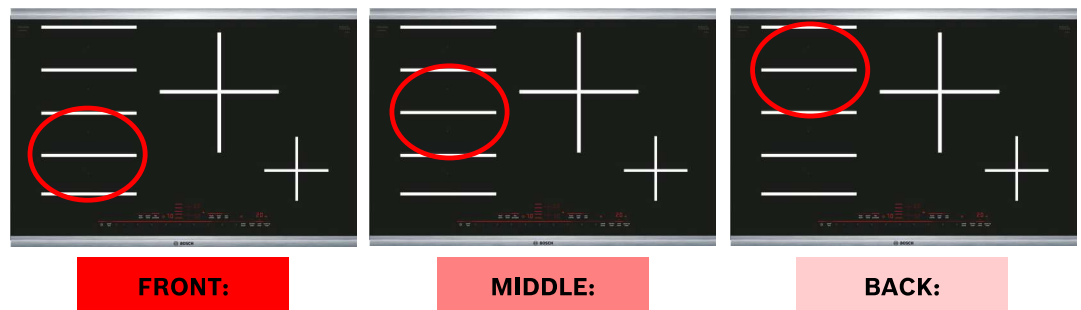
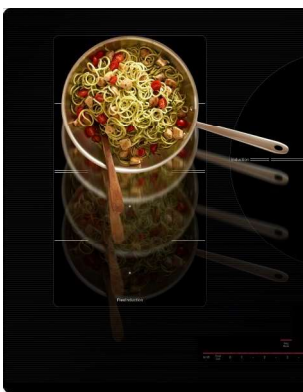
- Consists of 4 oval inductors and can be used as one large zone, or two independently controlled zones
- **PowerMove®** divides FlexInduction® into 3 preset power level zones—simply move the cookware to change the power level



— How It Works —

When **PowerMove®** is engaged, it uses the entire flexible cooking zone.

Three preset power levels are set to 9, 5, and 1.5—each of these presets can be changed during the cooking process. Individual zones are activated by moving the cookware.



800 & Benchmark[®] Induction

— Home Connect[®] —

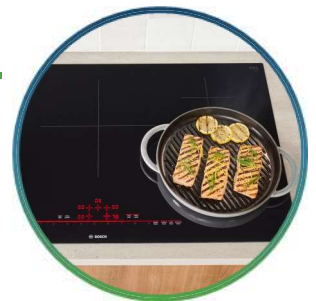


Monitor Your Cooktop

- Multi-tasking at its best—check the power level & kitchen timers from anywhere to know when dinner will be ready
- Double check that the cooktop was turned off if you've left the house

Get Culinary Inspiration

- All the latest cooking tip, techniques, and recipes—all in one app!
- Partners like **Kitchen Stories** are tied into the app for easy access to their library of 1,400+ recipes and cooking tutorials



Smart Support & Service

- Remote diagnostics can expedite service and support in many situations
- How-To Videos for maintenance are built into the app for convenient access

Vent Hood Control

- Connect a Bosch Home Connect[®] hood to the cooktop wirelessly
- Control the hood from the cooktop's control panel
 - Set fan speed
 - Turn on and off task lighting
- No more reaching up high or cleaning fingerprints off a stainless steel hood



Electric & Induction Cooktops

— Power Levels —

- 17 Power Levels for accurate heating & precise control
- Most power levels produce low to medium heat, as that is where most of the cooking process occurs
- When a 'Boost' time limit is reached it then reduces to a 9

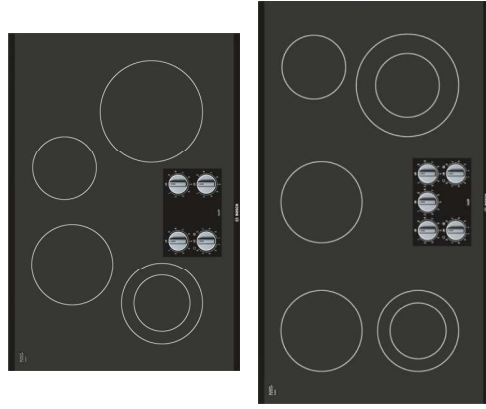
Power Level Setting	Percentage of Power	Operation Time Limit
1	3%	10 Hours
1.5	5%	10 Hours
2	6%	5 Hours
2.5	8%	5 Hours
3	11%	5 Hours
3.5	13%	5 Hours
4	16%	4 Hours
4.5	19%	4 Hours
5	22%	4 Hours
5.5	25%	3 Hours
6	30%	3 Hours
6.5	36%	3 Hours
7	44%	2 Hours
7.5	53%	2 Hours
8	64%	1 Hour
8.5	80%	1 Hour
9	100%	1 Hour
b (SpeedBoost [®])	150%	10 Minutes
Pb (ShortBoost)	150%	30 Seconds

NOTE: SpeedBoost[®] and ShortBoost are not available on every cooktop

Electric Cooktops

500 Series

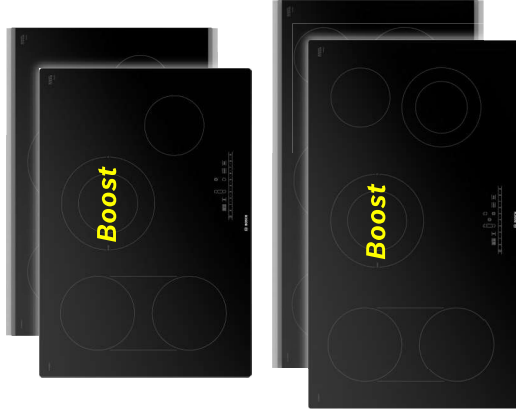
NEM5066UC – 30”
NEM5666UC – 36”



- Stainless steel color knobs (PBT)
- Dual ring element (2 on 36”)
- Heat indicator
- 9” – 2500 W element
- Frameless design

800 Series

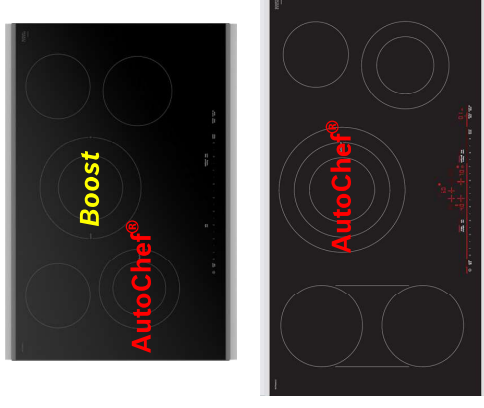
NET8069UC / NET8069SUC* – 30”
NET8669UC / NET8669SUC* – 36”



- + PreciseSelect® touch controls
- + True bridge element
- + 9” – 3600 W dual ring element
- + SpeedBoost®
- + Framed or Frameless design options

Benchmark® Series

NETP069SUC – 30”
NETP669SUC – 36”



- + 5 Burner 30” unit
- + AutoChef®
- + Count-up timer
- SpeedBoost® (30” only)
- + 2 Dual ring elements (30” only)
- + 1 Dual ring & 1 Triple ring elements (36” only)
- True bridge element (36” only)
- + PowerStart® (36” only)
- Framed design

* Model numbers NET8069SUC and NET8669SUC indicate Framed design

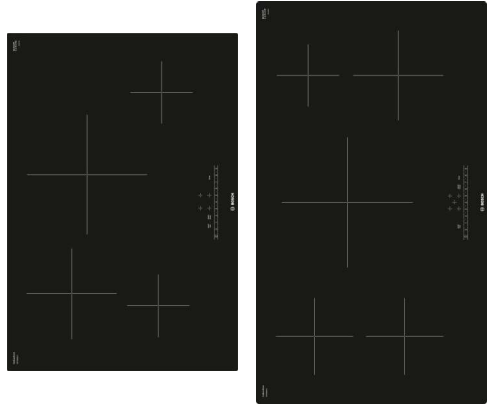


BOSCH

Induction Cooktops

500 Series

NIT5060UC – 30”
NIT5660UC – 36”

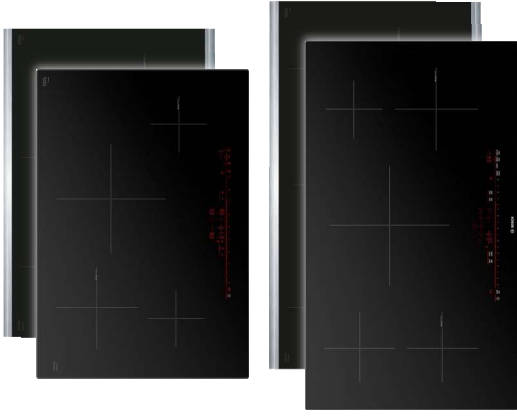


- 17 heat settings
- 11” – 3600 W element (30”)
- 12” – 5400 W dual ring element (36”)
- SpeedBoost®
- PreciseSelect® control
- Frameless design

30 Amp Breaker—30”
40 Amp Breaker—36”

800 Series

NIT8060UC / NIT8060SUC* – 30”
NIT8660UC / NIT8660SUC* – 36”



- + PreciseSelect® 2.0 controls
- + AutoChef® frying sensor
- + ShortBoost
- + Count-up timer
- + Home Connect® / Hood Control
- + Framed or Frameless design options

30 Amp Breaker—30”
40 Amp Breaker—36”

Benchmark® Series

NITP060UC / NITP060SUC* – 30”
NITP660UC / NITP660SUC* – 36”



- + FlexInduction® elements
(1 on 30” & 2 on 36” models)
- + PowerMove®
- PreciseSelect® 2.0 controls
- AutoChef® frying sensor
- ShortBoost
- Count-up timer
- Home Connect® / Hood Control
- Framed or Frameless design options

30 Amp Breaker—30”
50 Amp Breaker—36”



BOSCH

* Model numbers with an S indicate Framed design

24" Cooktops

Gas – 300 & 500 Series

NGM3450UC – 300S

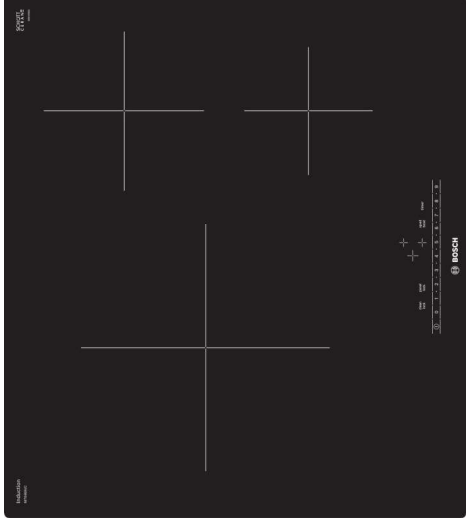
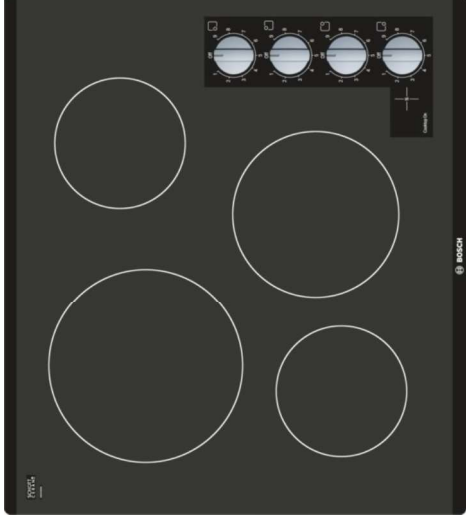
NGM5453UC – 500S

Electric – 500 Series

NEM5466UC – 24"

Induction – 500 Series

NIT5460UC – 24"



- 10,300 max BTU performance
- Stainless color metal knobs
- Continuous, cast iron grates
- FlameSafe device on each burner
- LP kit included
- ADA compliant
- Approved for installation over 24" wall ovens and **all** Bosch Speed Ovens

500 Series:

- + OptiSim® burner
- + Single burner "on" indicator light
- + Low profile maintop

- 8" – 2200 W element
- 6" – 1850 W element
- Residual heat indicator
- Stainless steel color knobs (PBT)
- Ceramic glass surface

- 17 heat settings
- PreciseSelect® touch controls
- 11" – 3600 W element
- SpeedBoost®
- ADA compliant



BOSCH