

30" Pyramid Canopy Chimney Hood

800 Series – Black Stainless Steel HCP80641UC



BOSCH
Invented for life



HCP80641UC
Black Stainless Steel

The 30" Bosch black stainless steel chimney hood helps guard against scratches and fingerprints.

Features & Benefits

Quiet blower 4.6 sones / 178 CFM low to 9.9 sones / 600 CFM high.

Bosch black stainless steel helps guard against scratches and fingerprints.

LCD touch display provide controls that are easy to use and read.

Dishwasher safe mesh filters makes cleaning and maintenance easy.

Non-ducted recirculation possible with separate accessory kit.

General Properties

Operating mode	Convertible: ducted / recirculating
Maximum CFM	600 CFM
Sones	9.9 HS / 4.56 WS
Number of speed settings	4-stage
Motor location	Integrated motor in hood chimney
Number of lights	2
Bulb type	Halogen
Total power of the lamps (W)	80 W
Damper included	Yes
Grease filter material	Aluminum
Grease filter type	Multilayer cassette

Technical Details

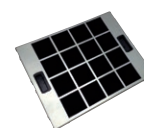
Volts (V)	120 V
Frequency (Hz)	60 Hz
Plug type	No Plug



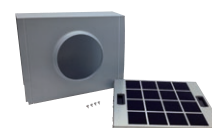
Dimensions & Weight

Overall appliance dimensions (width of canopy included) (HxWxD) (in.)	24 9/16"-38 7/8" / 28 1/4"-42 9/16" x 30" x 19 11/16"
Height of the chimney (in.)	19 9/16"-33 7/8" / 23 1/4"-42 9/16"
Required distance above cooktop/range cooking surface	24" Electric / 30" Gas
Diameter of air duct (in.) top	8"
Net weight (lbs)	49 lbs

Accessories-Optional



HCIFILTUC
Filter kit



HCREC5UC
Recirculation kit

HCPEXT4UC
Chimney extension for 9-11.5 ft. ceilings for use with HCP80641UC



For help and assistance with Bosch accessories please visit: www.bosch-eshop.com/eshop/bosch/us or call 1-800-944-2904 Mon-Fri 5am to 6pm PST Sat 6am to 3pm PST

Notes: All height, width and depth dimensions are shown in inches. BSH reserves the absolute and unrestricted right to change product materials and specifications, at any time, without notice. Consult the product's installation instructions for final dimensional data and other details prior to making cutout. Applicable product warranty can be found in accompanying product literature or you may contact your account manager for further details.

Warranties: Bosch warrants that the Product is free from defects in materials and workmanship for a period of three hundred and sixty-five (365) days from the date of purchase. The foregoing timeline begins to run upon the date of purchase, and shall not be stalled, tolled, extended, or suspended, for any reason whatsoever. This Product is also warranted to be free from cosmetic defects in material and workmanship (such as scratches of stainless steel, paint/porcelain blemishes, chip, dents, or other damage) to the finish of the Product, for a period of thirty (30) days from the date of purchase or closing date for new construction. This cosmetic warranty excludes slight color variations due to inherent differences in painted and porcelain parts, as well as differences caused by kitchen lighting, product location, or other similar factors. This cosmetic warranty specifically excludes any display, floor, "As Is", or "B" stock appliances.

For more information on our entire line of products, go to www.bosch-home.com/us or call 1-800-944-2904

© BSH Home Appliances Corporation. All rights reserved. Bosch is a registered trademark of Robert Bosch GmbH.

12/17

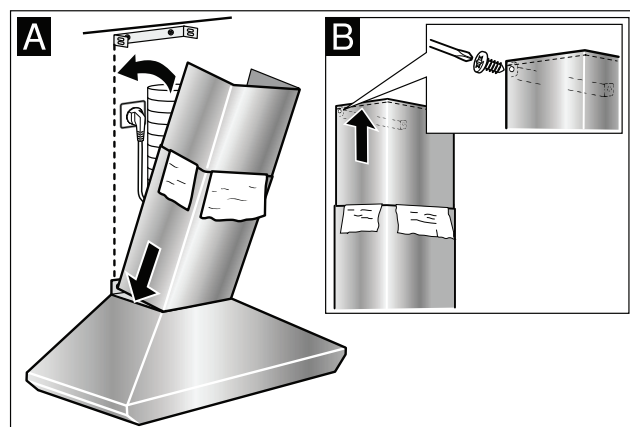
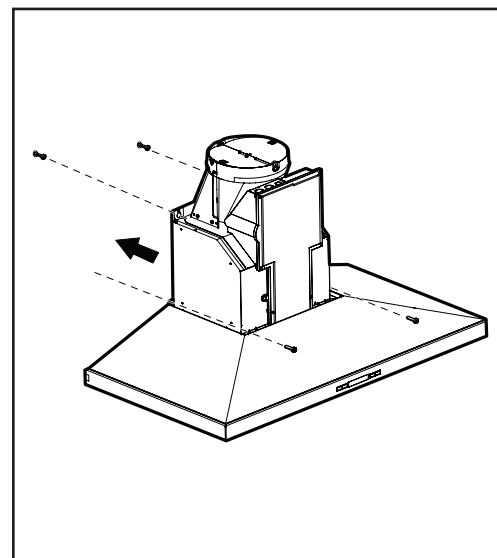
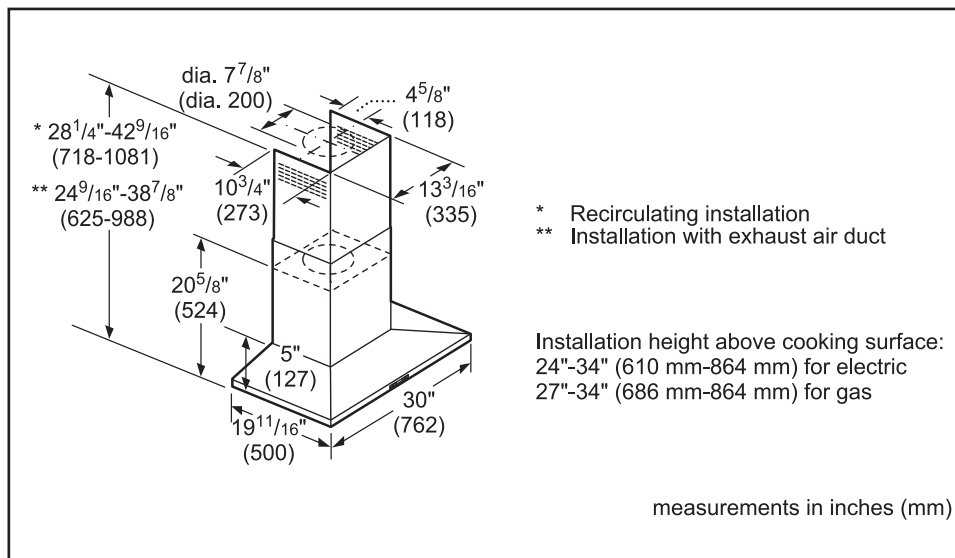
30" Pyramid Canopy Chimney Hood

800 Series – Black Stainless Steel HCP80641UC

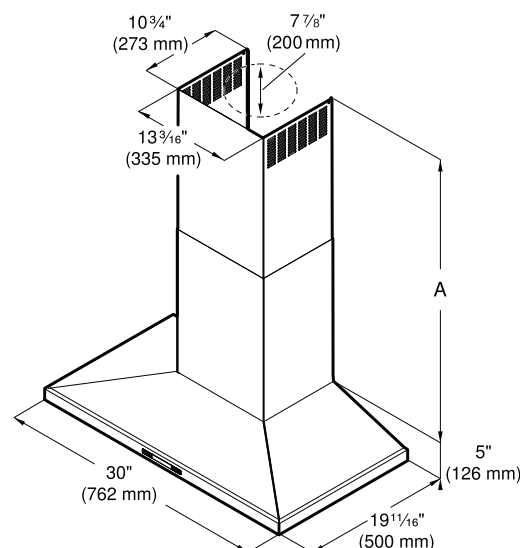


BOSCH
Invented for life

Installation Details



- | | |
|---|-----------------|
| A | Lower flue duct |
| B | Upper flue duct |



- A** Ducted operation:
 Min. / Max. $24\frac{9}{16}$ " (624 mm) / $38\frac{7}{8}$ " (985 mm)
 Recirculation mode:
 Min. / Max. $28\frac{1}{4}$ " (716 mm) / $42\frac{9}{16}$ " (1081 mm)

measurements in inches (mm)

For help and assistance with Bosch accessories please visit: www.bosch-eshop.com/eshop/bosch/us or call 1-800-944-2904 Mon-Fri 5am to 6pm PST Sat 6am to 3pm PST

Notes: All height, width and depth dimensions are shown in inches. BSH reserves the absolute and unrestricted right to change product materials and specifications, at any time, without notice. Consult the product's installation instructions for final dimensional data and other details prior to making cutout. Applicable product warranty can be found in accompanying product literature or you may contact your account manager for further details.

Warranties: Bosch warrants that the Product is free from defects in materials and workmanship for a period of three hundred and sixty-five (365) days from the date of purchase. The foregoing timeline begins to run upon the date of purchase, and shall not be stalled, tolled, extended, or suspended, for any reason whatsoever. This Product is also warranted to be free from cosmetic defects in material and workmanship (such as scratches of stainless steel, paint/porcelain blemishes, chip, dents, or other damage) to the finish of the Product, for a period of thirty (30) days from the date of purchase or closing date for new construction. This cosmetic warranty excludes slight color variations due to inherent differences in painted and porcelain parts, as well as differences caused by kitchen lighting, product location, or other similar factors. This cosmetic warranty specifically excludes any display, floor, "As Is", or "B" stock appliances.

For more information on our entire line of products, go to www.bosch-home.com/us or call 1-800-944-2904

© BSH Home Appliances Corporation. All rights reserved. Bosch is a registered trademark of Robert Bosch GmbH.

12/17