

# Bosch Dishwasher Quick Tips and Tricks

1

Use the 3<sup>rd</sup> rack for silverware, large utensils or other hard-to-place items.

2

Rackmatic® system lets you adjust rack height to accommodate taller items in the lower and middle racks. Simply pull out the middle rack, press the side levers, and adjust each side up or down.

3

Face dishes inward. Use angled tines to help with loading. Use fold down flip tines to help fit bulkier items like large pots.

4

Clean the dishwasher filter bi-monthly with normal use. Simply unscrew the knob and lift the filter out. Wash the filter by rinsing it with warm water and dishwashing soap.

5

Bosch recommends using Finish® detergent tabs and Jet-Dry® Rinse Aid for best results.



## Other useful tips to get the most from your Bosch dishwasher:

- **With Bosch PrecisionWash®**, there is no need to pre-rinse—simply scrape food off and place dishes in the dishwasher.
- **Set your water heater temperature** between 120 and 125 degrees F. If too high, the soap will not activate and perform properly.
- **Start your dishwasher** by pressing the “On/Off” button and selecting a cycle and option if desired, and then press “Start”. Always ensure nothing is blocking the spray arms before starting a wash cycle.
- **All Bosch dishwashers use PureDry®**, with no exposed heating element for energy-efficient drying that is safe on plastics. PureDry® whisks moisture away from dishes as they cool, so you may see condensation on the tub walls, which is normal.
- **Clean dishwasher surfaces** with a damp cloth and mild soap. Do not use abrasives or bleach-based cleaners.

For complete product information, refer to the Use and Care Manual available online at: [www.bosch-home.com/us/owner-support](http://www.bosch-home.com/us/owner-support)

# Perfect Results



**PrecisionWash® System** – Intelligent sensors continually scan and check the progress of dishes throughout the cycle, while precision spray arms target every item of the load to ensure dishes come out clean

## Food Particle Sensors

Our wash system uses advanced sensors to identify soil in the water, adjusting temperature and cycle length to eliminate redeposits. Getting your dishes as clean as they can be.



## Precision Spray Arms

Specially engineered and laser cut, our precision spray arms aim water directly at the dishes to produce more efficient cleaning and a quieter performance.



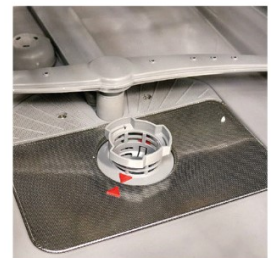
## Detergent System

This state-of-the-art tray and basket combo waits for the right time and water temperature before releasing the detergent, achieving clean dishes with every cycle.



## Cycles and Options

Producing cycles and options that fit your lifestyle, like Speed60® and Extra dry, we make it easy to find a wash to achieve clean dishes each time.

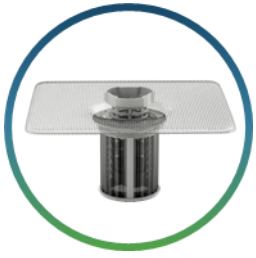


## Triple Filtration Filter

With multiple layers of high quality grade mesh, our filtration system effectively filters out food particles, eliminating the need for a noisy disposal.

**PrecisionWash™** – So that when your dishes are done, so are you.

# Perfect Results



**Triple Filtration System<sup>®</sup>** – Cleans & recycles water during wash cycle and prevents food from re-depositing

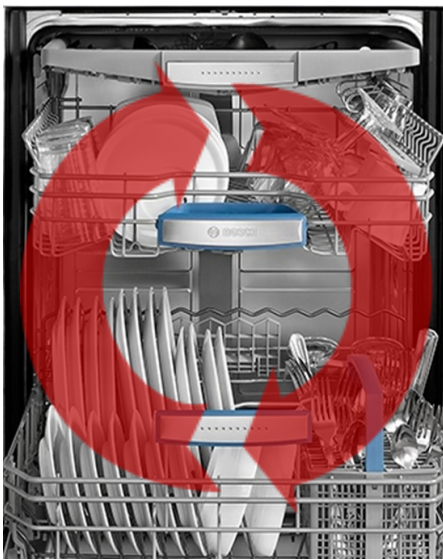
**Detergent Tray** – Optimizes the cleaning performance through controlled dissolution of detergent tablets, powder and gel



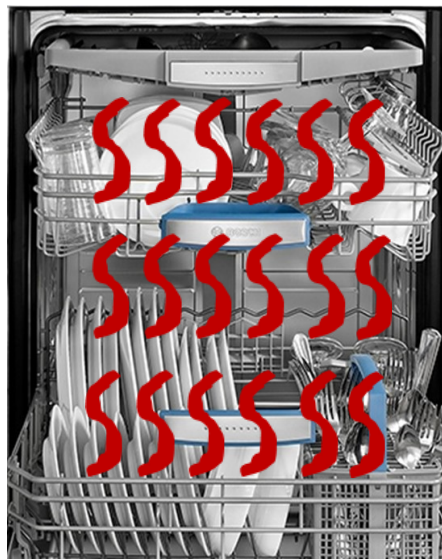
**ExtraDry option** – Turns up the water temperature in the final rinse and increases drying time for perfectly dry dishes

## Condensation Drying

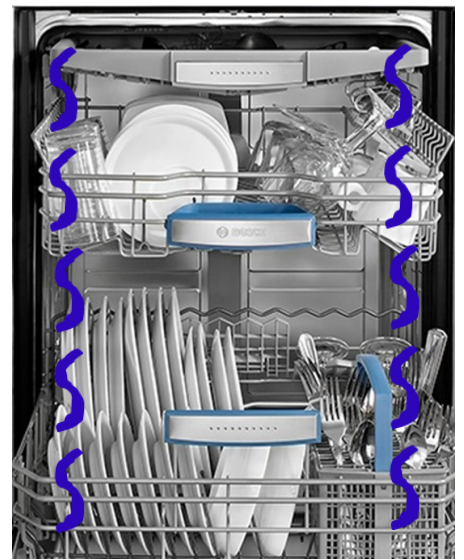
*The foundation on which all Bosch drying systems are built on—harnessing the power of science!*



1. Hot water throughout the wash cycle & final rinse heat the dishes



2. Hot dishes & remnant heat in tub cause water droplets to evaporate



3. Water vapor condenses on the cool tub walls then rinses down the drain

# Perfect Results

## PureDry<sup>®</sup>

*Bosch dishes don't just get dry, they're PureDry<sup>®</sup>*

- **Hygienic drying**  
*No fans or vents to pull dirty outside air in*
- **Safely place plastics in the bottom rack**  
*The absence of an exposed heating element means they won't melt*



### Drying Tips

- Scrape—don't rinse!
- Use rinse aid
- Intermix plastics between ceramics & glass dishes
- Unload dishes from the bottom to the top

## AutoAir<sup>®</sup>

*A little fresh air, for a lot better dry.*

- **Automatically opens the door at the end of the cycle — for dishes that are 40% drier**  
*Lets fresh air circulate for drier dishes—automating a common consumer behavior*
- **Select from 'Cycle Options'**  
*Consumer can select when they would like to utilize AutoAir<sup>®</sup>*



### How It Works:

**Phase 1**—Condensation drying takes place

**Phase 2**—Door opens once the temperature inside the tub is reduced to 118°F

- Warm, humid air leaves dishwasher
- Cool, dry air flows in
- The cool, ambient air is heated by the warm dishes
- The heated, ambient air absorbs water from the dishes



# Perfect Results

## CrystalDry™

*The ultimate clean. The ultimate dry, even on plastics.*



Uses **Zeolite** to collect moisture and transform it into heat, up to 176°F. The hot air is circulated throughout the tub for the ultimate dry—leaving dishes up to 60% drier.

- Zeolite is a natural, porous mineral that can adsorb water vapor & humidity
- BSH has been using Zeolite in Europe since 2008
- Drying processes is patented and exclusively in BSH dishwashers worldwide

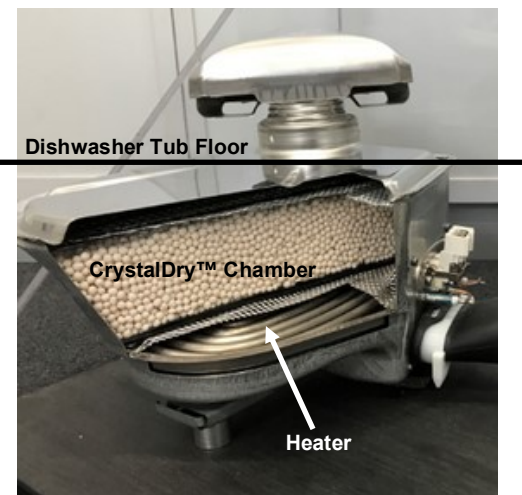
### Process 1 — Drying Phase



1. Fan draws wet air into CrystalDry™ chamber containing Zeolite
2. Zeolite adsorbs water from the air, stores it, & releases heat
3. Hot, dry air is guided back into tub to dry dishes

### Process 2 — Rejuvenation Phase

1. During the prewash of next cycle, Zeolite is heated by an internal heater in the chamber
2. Zeolite releases the stored moisture and the hot, wet air is guided into the tub and heats the dishes
3. Dried Zeolite is recharged and ready for next drying phase



# Perceivable Quality



**Energy Star Partner** – Sustained Excellence: *the most awarded dishwasher brand worldwide*

**Compliance with NSF Standards** – *eliminates 99.9% of bacteria*



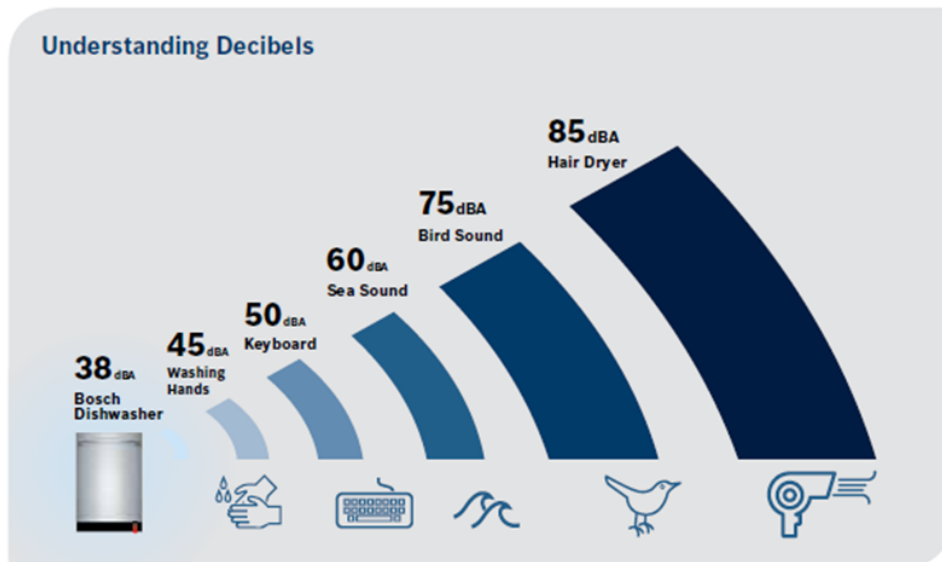
**High Tech Leak Protection Systems** – *24/7 Overflow Protection or 24/7 AquaStop® protect the home from water damage around the clock*

**Quality Control Checks**– *each unit must pass 485 checks before it leaves the factory*

# 485



**Owens Corning (3<sup>rd</sup> Party) Certified** – *the quietest dishwasher brand in the U.S.\**



\*Based on an average of sound ratings of 24" full size stainless steel tub dishwashers contained in major brands websites. Major brands defined as TraQline Top 5 Market Share December 2019.

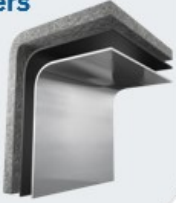


# The Anatomy of Quiet

Quiet – the #1 purchase driver after price

## Multiple Insulation Layers

Multiple layers of sound-absorbing insulation: Coated stainless steel, baked on bitumen, and cotton fiber dampen noise.



## EcoSilence™ Motor System

Two small, brushless motors, instead of a single large one, reduce friction and work more efficiently. Motors are held by a rubber suspender to absorb vibration. Drain pump detects when water is drained and stops motor immediately to minimize snorkeling noise.



## Solid Molded Base

Absorbs sound from motor & pump while minimizing vibration.



## Triple-filtration System

Grindless system filters out food particles, eliminating the need for a loud food disposal.



## Detergent Tray

Optimized for tablets, this tray holds detergent in place for a dedicated spray jet to directly dissolve tablet and minimize spraying the door. (Note: dishwasher also work with powder and gel.)



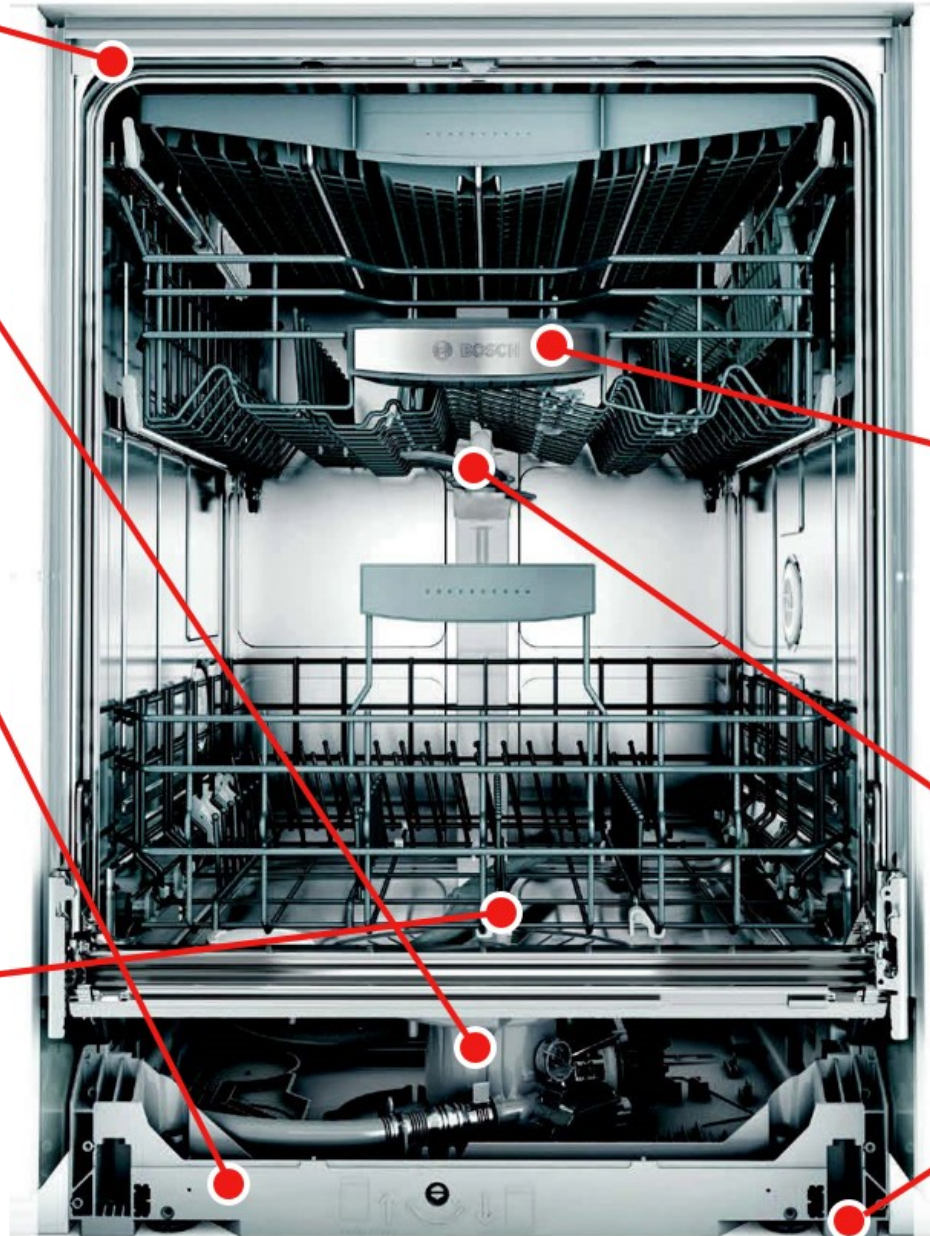
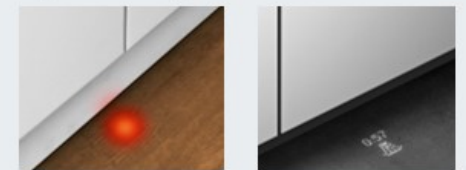
## Spray Arm

Precision spray arm projects water directly at dishes, reducing noise.



## InfoLight® / TimeLight®

So quiet, we've added a light to let you know a cycle is running.

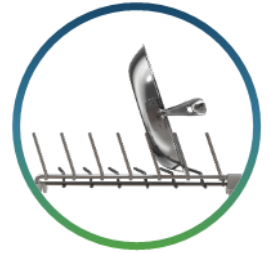


# Simple Solutions



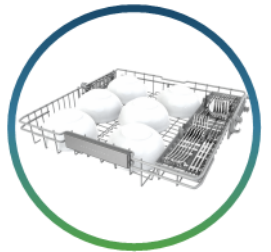
**Rackmatic®** – one step adjustment for up to 9 rack positions — fits taller items like stemware in the middle rack while leaving room for pots and pans below

**FlexSpace™ Tines** – fold down every other tine in one simple step, making room for larger, bulkier items



**EasyGlide™ wheels** – smooth-rolling ball bearings deliver racks with an effortless glide — even when the rack is fully loaded

**3<sup>rd</sup> Racks** – three 3<sup>rd</sup> rack options provide additional loading space and flexibility to load large utensils and small dishes



## Conveniently Reorder Products

- Set up directly through the **Amazon Alexa** app  
*Activate dishwasher skill > Set up reorders*
- **Home Connect™** tracks detergent tab inventory with each cycle
- When inventory is low, additional tablets will be ordered through **Amazon Smart Reorder**
- Once package is delivered, the ordered quantity is added back into the tablet counter





# Bosch 100 Series Dishwashers

## Feature Highlights

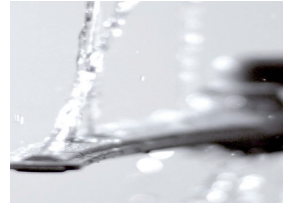


**SHE3AR7(2/5/6)UC**  
**SHX3AR(2/5/6)UC – Bar**



### 24/7 Overflow Protection

Watches over your kitchen even when the dishwasher is not running. If the water level is too high, the tub pumps out the water and closes the inlet valve.



### PrecisionWash™

Equipped with intelligent sensors and powerful precision spray arms, we ensure your dishes are beautifully clean.

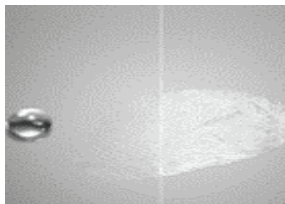


### Quietest Dishwasher Brand in the U.S.

With 18 unique sound-reducing technologies, and starting at 50dBA, Bosch leads the way in quiet.



**SHEM3AY5(2/5/6)N**



### Anti Fingerprint Stainless Steel

Providing the ultimate exterior protection against fingerprints, dirt, and smudges.



### Utility Rack

Making space for those hard to place items and opening up precious space in the upper rack for all your washing needs.



### Specialized Cycles & Options

Providing you even more cycles and options for every kind of clean – introducing Speed60™ with a 1 hour wash and dry.

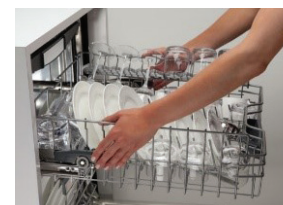


**SHXM4AY5(2/5/6)N**



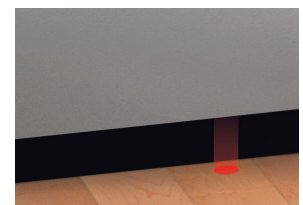
### 3<sup>rd</sup> Rack

Our 3<sup>rd</sup> rack provides 30% more loading area while it's V-shape leaves room below for tall items in the upper rack.



### 3-Level RackMatic

Easily adjust to three heights and nine rack positions, allowing taller items to fit in the middle or larger pieces in the lower rack.



### Infolight®

Quiet you can see – Infolight projects a red beam on the floor to signal that a cycle is running, and turns off when your dishes are done.

